



Epson SureColor F3000 DTG

- Designed for low-cost high-volume direct to garment (DTG) production
- Staggered dual 2.6" print heads enable high-speed single-pass 5C printing
- Bulk ink system for increased efficiency and a reduced running cost
- Fast loading with an upgraded platen and auto platen height adjustment
- Industrial grade mechanism with high durability and advanced self cleaning
- Epson UltraChrome® DG ink for crisp and bright images with a low tack finish, high stretchability and good wash/UV durability
- Garments produced with Epson UltraChrome® DG ink are suitable for use by all ages
- Supplied with Epson Garment Creator and Accounting software along with Epson Cloud Solution PORT for enhanced management, service and support
- Comprehensive and flexible service with cover extendable up to FIVE years complete with optional User Self Replacement of selected components including print heads¹

Epson SureColor Fabric Range SC-F3000 Production DTG System

Product Specifications

PRINTING TECHNOLOGY	
Print Head	Dual Epson 2.6" MicroTFP PrecisionCore™
Configuration	Dual 10 lines white and 8 lines colour, 400 noz/line
Maximum Resolution	1200 x 1200 dpi
Features	Staggered head array, Linear Motion Guide carriage, auto height adjustment, ink-less nozzle status monitoring, heavy duty dust catcher, auto head & cap clean, opt. head User Self Replacement
INK SYSTEM	
Ink Type	Epson UltraChrome® DG
Supply System	Bulk supply with user replaceable 1.5 L bags
Configuration	CYMK + 2 x Wh + Maint Liquid
PERFORMANCE ²	
Light shirts (no white)	21s Production
Dark Shirts (with white)	40s Production
MEDIA SUPPORT	
Compatible Fabrics	Cotton, polyester and mixed fibre garments ³
Max Thickness / Weight	29.5 mm / 1.5 kg per garment
Max Print Area	Large Platen: 406 x 508 mm Medium and grooved platens: 335 x 406 mm
OPERATION	
Control Panel	4.3" colour touch screen
Utility Software	Epson SetUp Navi, Accounting Tool, Edge Dashboard, Comms Driver, Control Dashboard, EpsonNet Config/ Set-up/Print, F/W updater & Cloud Solution PORT
Application Software	Epson Garment Creator (Win/Mac 64-Bit)
Interface	High Speed USB2.0 & 10/100/1000 Base-T Ethernet
Memory	4 GB
Power Consumption	168W operating/ 20W sleep
Operational Space	3.0 x 1.7x 2.6 m (WxHxD)
ENVIRONMENTAL	
Operational Temp	10~35°C (15~25°C recommended)
Operational Humidity	20~ 80% (no condensation, 40~60% recommended)
Power Supply	240V, 4.6A, 50 Hz - 60 Hz
PHYSICAL	
Printer	1.7 x 1.3 x 1.8 m (WxHxD), 330 kg (no ink)
Printer Shipping Carton ⁴	2.3 x 1.6 x 1.8 m (WxHxD), 480 kg

OPTIONAL ACCESSORIES

SCF30601Y	Printer with 1Yr On-Site Warranty)
SCF30603Y	Printer with 1Yr Wty + 2Yr CoverPlus (3Yrs Total Cover)
SCF30605Y	Printer with 1Yr Wty + 2 x 2Yr CoverPlus (5Yrs Cover)

OPTIONAL ACCESSORIES

C12C936241	Large Hanger Platen
C12C933961	Grooved Platen (for shirts with buttons or a zipper)
C12C936261	Medium Hanger Platen
C12C936281	Small Hanger Platen
C12C933951	Extra Small Platen
C12C933971	Sleeve Platen
1YWSCF3060	1Yr CoverPlus
2YWSCF3060	2Yr CoverPlus

CONSUMABLES

C13T736100	20 L Pre-Treatment Liquid (concentrate)
C13T43R200	18 L Polyester Pre-Treatment Liquid
C13T47W10N~40N, A0N, B00	1.5 L ink bags (K/C/M/Y, Wh, Maint Liquid)
C13T736200	Maintenance Kit
C13S210105	Head Cleaning Set
C13S210107	Flushing Pad Set
C13S210111	Replacement Air Filter Set
C13S210109	Anti-Drying Cap
C13S210071	Replacement re-usable Waste Tank
C13S210118	Large Hanger Platen Grip Pad
C13S210119	Medium Hanger Platen Grip Pad
C13S210120	Small Hanger Platen Grip Pad

WHAT'S IN THE BOX⁴

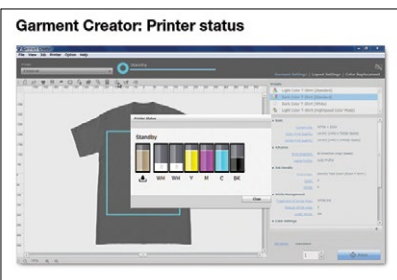
Printer, ink supply system, stand, power cords, 1 x set ink/maint liquid bags, Cotton Pre-Treat, Medium Hanger Platen, waste tank, maintenance kit, utility software, set up guide, user manual (on CD), Garment Creator and Accounting software (via web download)

¹ Standard Warranty is 1 year for all non-consumable components including print heads when the printer is operated and maintained correctly and used with Genuine Epson UltraChrome DG ink. Cover can be extended up to a maximum of 5 years through the optional purchase of CoverPlus. Free on-site service is provided for limited areas across Australia and New Zealand (refer to the relevant web site for further information).

² Figures are print speeds only for an A4 portrait image; actual production times will depend on garment type and preparation, heat press operation, computing & network systems, image size and print mode.

³ Optimised for garments with a moderate to loose weave and 50% or more cotton content. With appropriate pre-treatment a wide range of single and mixed fibre garments can be supported however print adhesion and wash durability will vary. Customers working with fabrics that have a tight weave and/or cotton content less than 25% are recommended to test prior to purchase and/or production.

⁴ Ink and Pre-treat are shipped separately to the printer. The DTG process requires the use of a heat press; please consult your dealer about suitable models. For high speed production a pre-treatment machine would also be recommended.



Supplied with enhanced Epson Garment Creator software for Macintosh® and Windows®



Epson Cloud Solution PORT provides upgraded management reporting, enhanced support & service with optional User Head Replacement



Epson is the registered trademark of Seiko Epson Corporation. All other names and company names used herein are for identification purpose only and are trademarks of their respective owners; Epson disclaims any and all rights. Specifications are subject to change without notice. Visit www.epson.com.au or www.epson.co.nz for the latest information.